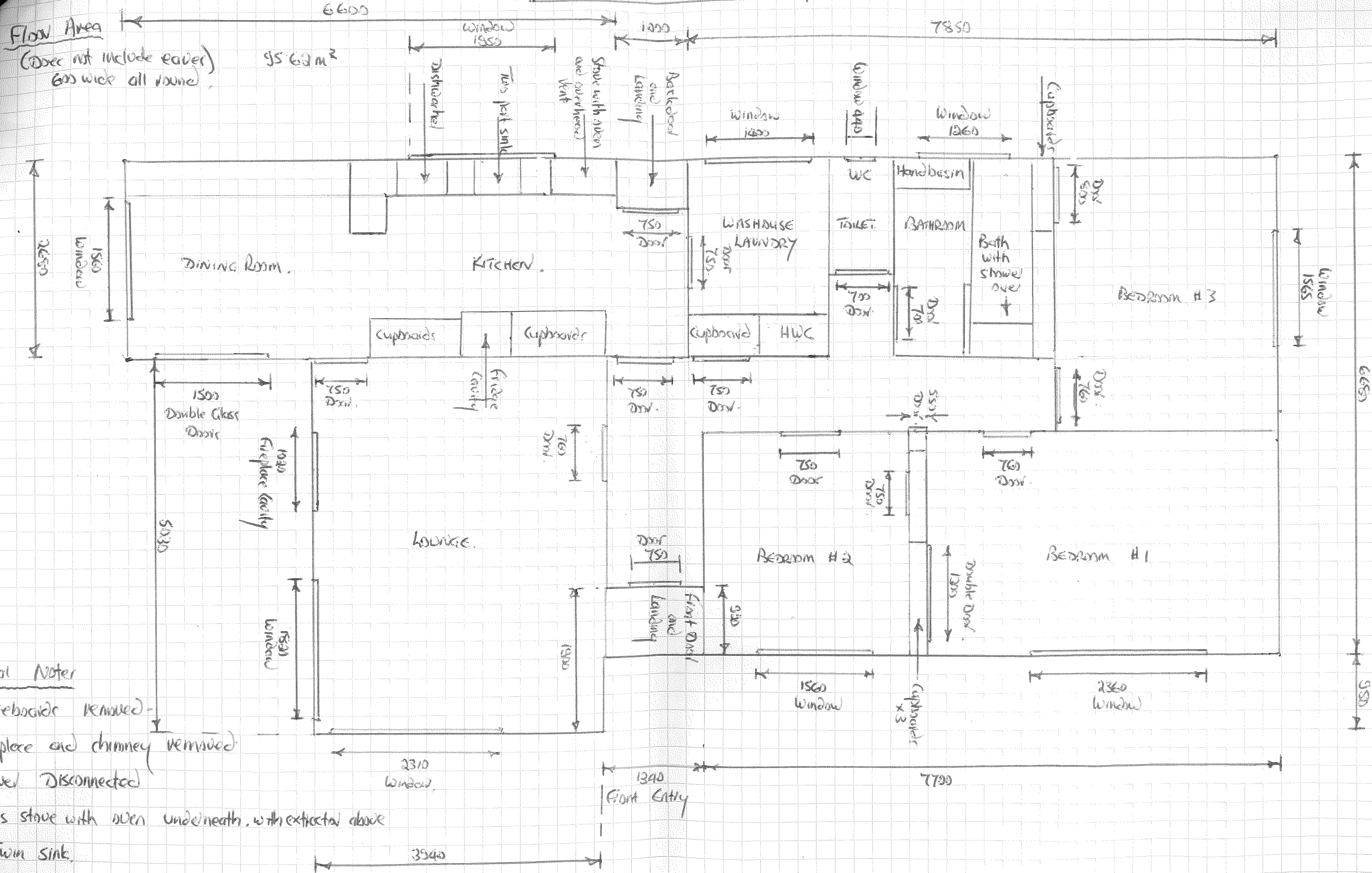


85 TEGEL ROAD - DRURY



General Notes

- 1) Baseboards removed
- 2) Fireplace and chimney removed
- 3) Power disconnected
- 4) Gas stove with oven underneath, with extractor above
- 5) Twin sink
- 6) Dishwasher
- 7) Cavity for fireplace
- 8) Tap fitted to laundry